

**Health Profile of Ward 5
From the 2001 Cuyahoga Family Health Survey**

**Prepared for
Sisters of Charity Foundation**

**By
The Center for Community Solutions**

May 2, 2007



INTRODUCTION

This report provide descriptive analyses of health conditions in the Ward 5 area as revealed by analyses of data from the Ohio Family Health Survey of 1998 and 2004, and the Cuyahoga Family Health Surveys Cuyahoga Family Health Survey (CFHS) of 2001.

The ward includes almost all of the Central Statistical Planning Area (SPA), as well as major portions of Fairfax and Kinsman SPAs. See the map below. The report provides a comparison of the ward to the City of Cleveland and Cuyahoga County.

The 2001 Cuyahoga Family Health Survey interviewed 285 adults age 18 and over in Ward 5 about their health and health care. If there were children in the household, the surveyed adult also provided information about one child's health and health care; a total of 101 children under 18 in Ward 5 were surveyed. The survey responses were weighted to provide estimates for the entire adult and child population in the ward.

This report provides estimates of the number and percentage of adults and children with the following characteristics:

A. Health Insurance and Access to Care

- Uninsured at the time of the survey or at any time in the past year
- Without a medical home, i.e., a usual source of care other than the emergency room
- With one or more emergency room visits in the past year
- With unmet healthcare needs

B. Health Status

- In fair or poor health
- Adults with high blood pressure; heart or circulatory disease; and diabetes
- Children with asthma or other chronic conditions
- Adults who smoke cigarettes

C. Health Care Utilization

- Medical visits in the past year
- Multiple emergency room visits in the past year
- Dental visits in the past year

D. Satisfaction with Health Care

- Overall health care rated "poor"

Because adults 65 and over differ in general from younger adults in their health status and utilization, we provide separate estimates for the two age groups, as well as estimates for all adults 18 and over. In the analyses below, the phrase "older adults" refers to adults age 65 and over, while "working-age adults" refers to those ages 18 to 64.

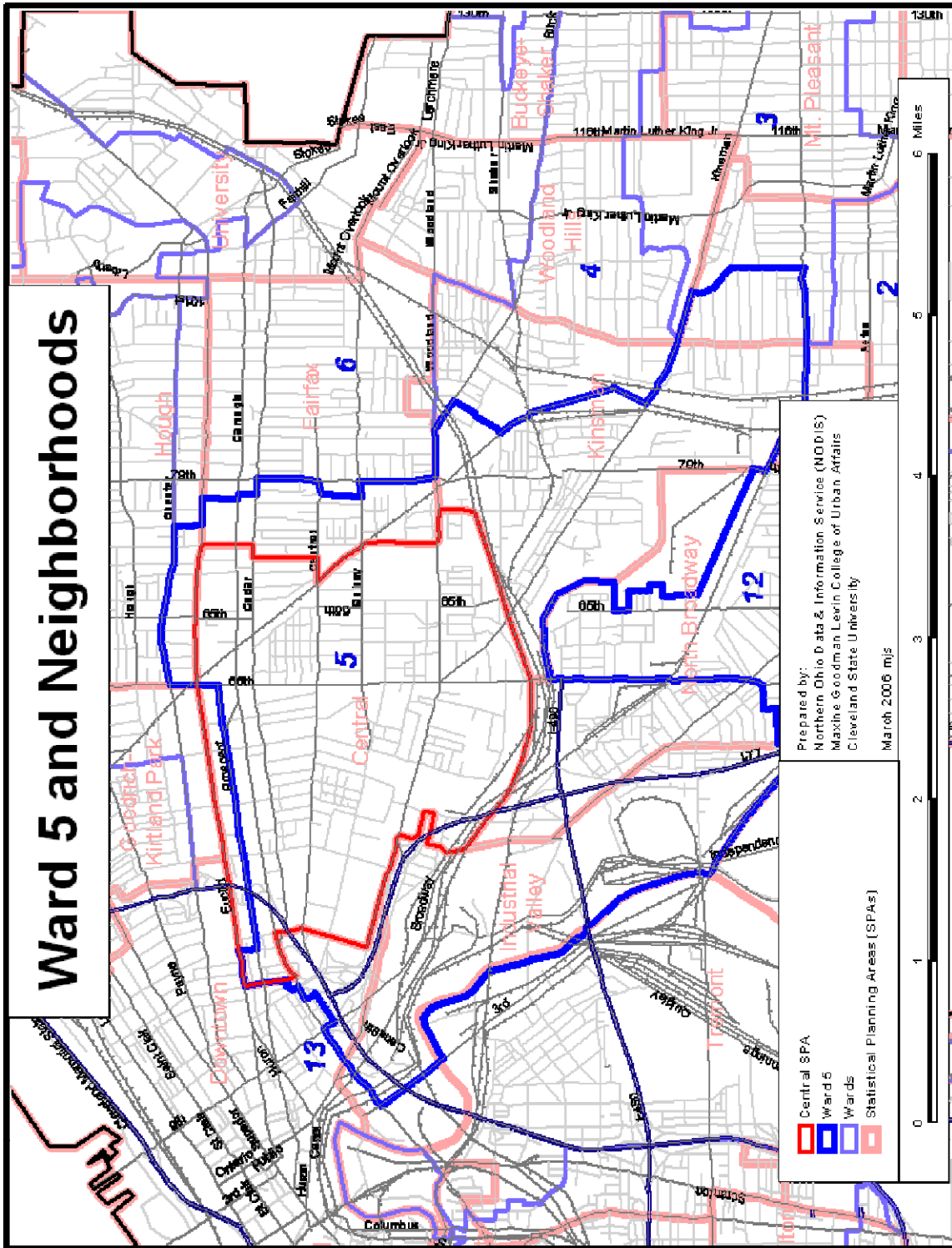
We compare the estimates for Ward 5 with those for Cleveland and Cuyahoga County in 2001, and indicate the trend from 1998 to 2004 for the city and the county.

Because the data are derived from a sample and not from the whole population, each estimate has an associated margin of error, which yields a confidence interval. These intervals indicate the range within which we are 90 percent certain the true value of the characteristic lies. When comparing the ward to the city and the county, or comparing the city or county estimates for different years, the differences are said to be “statistically significant” only if the confidence intervals do not overlap.

Statistical significance, or the lack thereof, is greatly dependent on sample size and the level of certainty desired. Where the sample size is relatively small, as is the case with the sample in Ward 5, the confidence intervals are wider than when the sample size is larger. In addition, confidence intervals with a high level of certainty, as we use here at 90 percent, are wider than intervals with a lower level of certainty. With a small sample size and a high level of certainty, statistical significance is difficult to achieve.

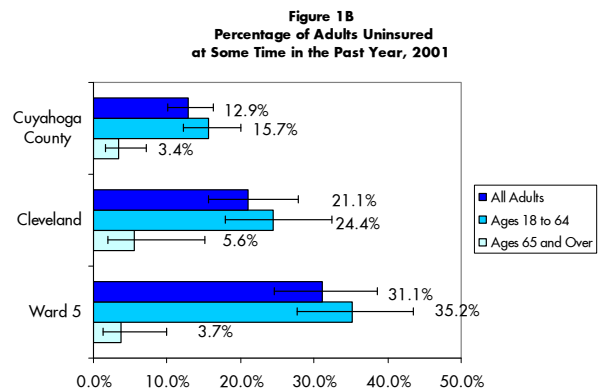
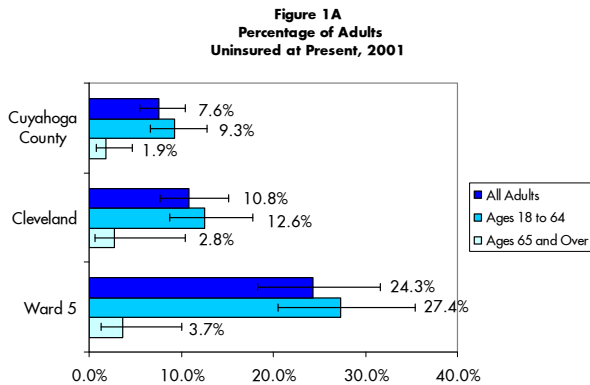
We indicate in the discussion which differences are statistically significant. In the charts, we show confidence intervals by an “I-beam” at the end of each data bar, so it is easy to see whether the intervals do or do not overlap. However, while many differences discussed below are not statistically significant due to small sample sizes and/or 90-percent certainty, we believe nevertheless that in many cases they may be still meaningful in indicating the relative size of a given characteristic for different geographic areas and different years. Such apparent “non-significant” differences are noted, but we caution readers to come to their own conclusions about their validity.

That the confidence intervals for the 18-to-64 age group and all adults often overlap is due to the fact that the working-age population constitutes 87 percent of all adults in the ward and 77 percent in the county, and therefore, the two groups have similar characteristics.



A. Health Insurance and Access to Care

1. Uninsured Adults



We analyze both the rate of the uninsured at the time of the survey and at any time in the year prior to the survey. The latter rate is higher than the former, since it includes those who are uninsured at present. We address both rates here because they provide insight into different dimensions of the uninsured population, and allow us to estimate the number of persons who only have intermittent coverage.

- In 2001, an estimated 2,100 adults in Ward 5, or just under one in four, had no health insurance at the time of the survey; we estimate an additional 600 adults were uninsured at some other time during the year. Altogether, just under one-third of all adults in the ward, were uninsured at some time during the year, higher than the rate of one in five in Cleveland, and significantly higher than the rate of one in eight in the county.
- Because of near-universal coverage under Medicare for older persons, only 3.7 percent of older adults in Ward 5 were uninsured at some time during the year, while 35.2 percent of working-age adults in the ward lacked insurance during the year, 27.4 percent at the time of the survey.
- Between 1998 and 2004, the percentage of working age adults who were uninsured at some time during the year increased in both the city and the county. Over the same period, the uninsured rate for older adults declined in the city, but remained the same in the county.

2. Uninsured Children

Figure 2A
Percentage of Children Under 18
Uninsured at Present, 2001

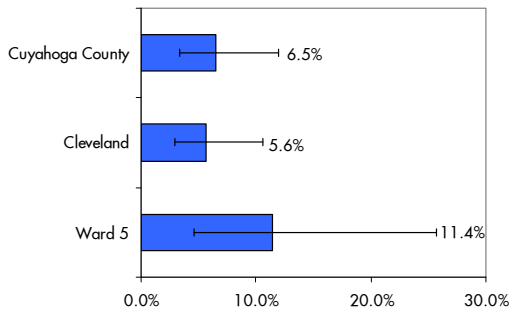
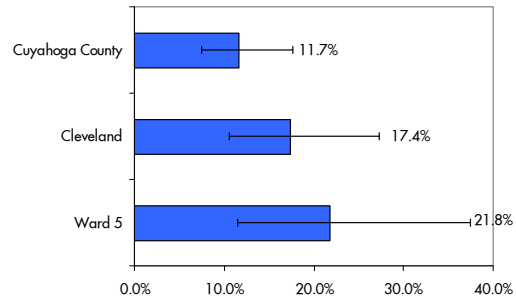


Figure 2B
Percentage of Children Under 18
Uninsured at Some Time in the Past Year, 2001



- One in every ten children under 18 in Ward 5, more than 600, were uninsured at the time of the survey in 2001, and an estimated 550 additional children lacked health insurance at some other time during the year. Altogether, one in five children in the ward were uninsured at some time during the year, compared to one in six in the city and just over one in ten in the county.
- From 1998 to 2004, the percentage of children who were uninsured declined in the city and declined significantly in the county. This decline can be attributed at least in part to the expansion of Medicaid eligibility for children under the State Children's Health Insurance Program (SCHIP, or Healthy Start).

3. Medical Home

Figure 3A
Percentage of Adults
Without a Medical Home, 2001

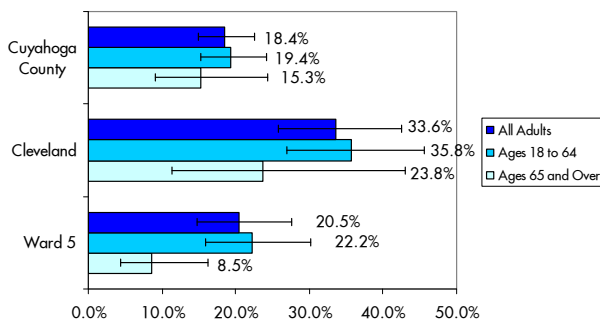
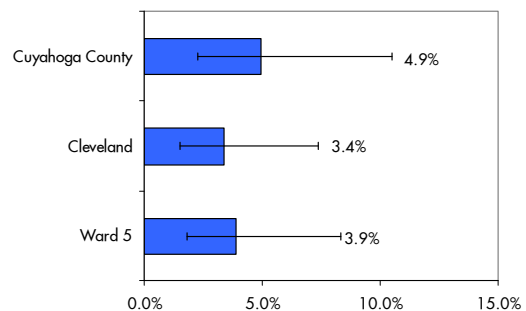


Figure 3B
Percentage of Children Under 18
Without a Medical Home, 2001



Adults:

- In Ward 5 in 2001, one-fifth of all adults, an estimated 1,800, lacked a medical home, a usual source of medical care other than a hospital emergency room. This is a lower

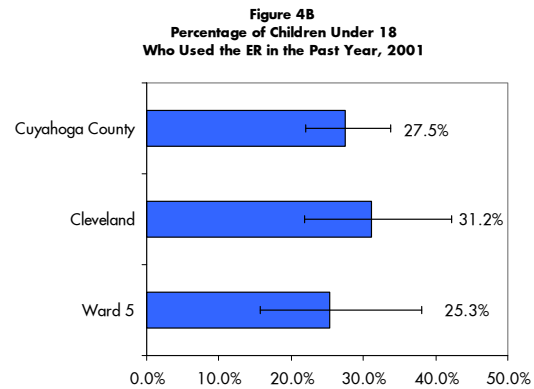
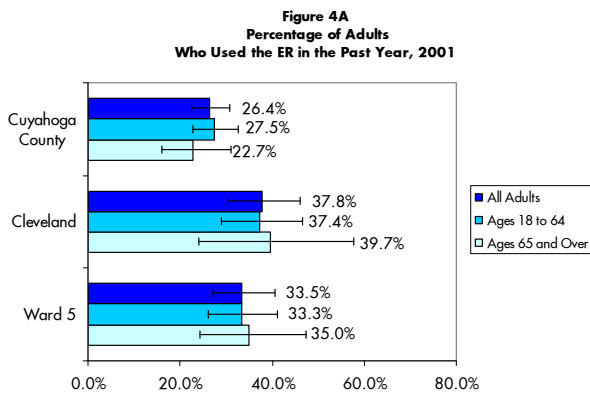
proportion than for the city as a whole, where one in three adults lacked a medical home, and slightly higher than for the county, where 18 percent did not have a medical home.

- Estimates suggest that compared to working-age adults, fewer older adults lacked a medical home in 2001, whether in the ward, the city, or the county. In Ward 5, one in twelve older adults did not have a medical home, compared to more than one in five working-age adults.
- From 1998 to 2004, the proportion of working-age adults lacking a medical home declined significantly in both the city and the county. Among older adults the proportion lacking a medical home increased in the city but declined in the county.

Children:

- A greater proportion of children under 18 had a medical home than did adults. In the ward, 200 children, or 3.9 percent, lacked a medical home in 2001, slightly higher than the 3.4 percent of Cleveland’s children but lower than the 4.9 percent in the county.
- As with working-age adults, the proportion of children without a medical home declined significantly in both the city and the county from 1998 to 2004.

4. ER Use



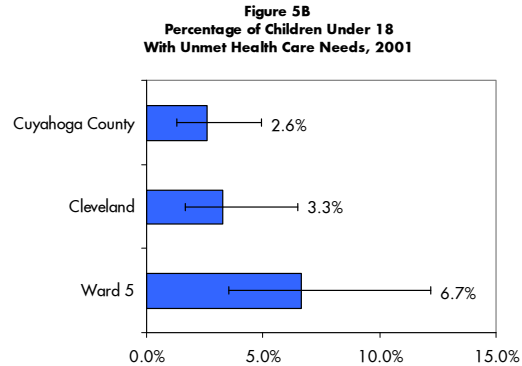
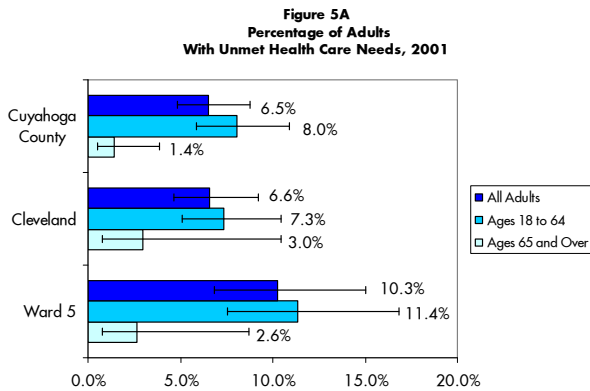
Adults:

- One-third of all adults in Ward 5, an estimated 2,900, used a hospital emergency room in the past year in 2001, slightly lower than the 37.8 percent in Cleveland but higher than the rate of just over one-fourth in the county. The proportion was similar for both working-age and older adults in the ward, 33.3 percent and 35.0 percent of whom used the ER, respectively.
- ER use among working-age adults declined in both the city and the county between 1998 and 2004. Among older adults, the proportion using the ER increased in the city but declined in the county

Children:

- Compared to adults, a smaller proportion of children in the ward used the ER in 2001; one-fourth of children or an estimated 1,300, had one or more ER visits in the past year. This is a smaller proportion than for Cleveland, where almost one-third of children used the ER and a slightly smaller proportion than for the county, where just over one-fourth had ER visits.
- As with working-age adults, ER use among children decreased in both the city and the county between 1998 and 2004.

5. Unmet Health Care Needs



Adults:

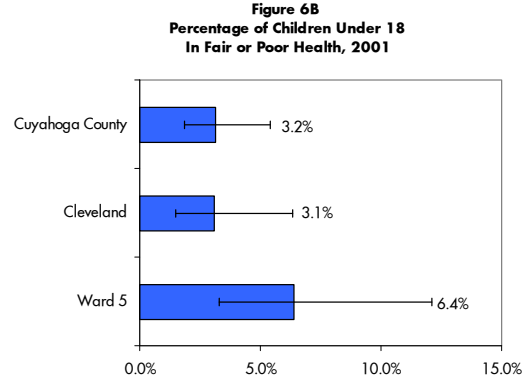
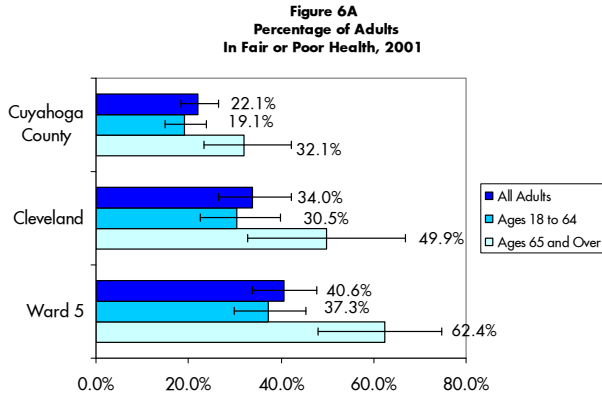
- An estimated 900 adults in Ward 5, or one in ten, reported having unmet health care needs in 2001, a slightly higher proportion than the 7 percent in both Cleveland and Cuyahoga County.
- A smaller proportion of older adults than working-age adults had unmet needs at all geographic levels. In Ward 5, only 2.6 percent of older adults reported unmet needs, compared to 11.4 percent of working-age adults.
- From 1998 to 2004, the percentage of working-age adults with unmet needs declined slightly in the city and increased slightly in the county. However, the percentage of older adults with unmet needs increased in both the city and the county over the same time period

Children:

- Children in the ward experienced a lower rate of unmet needs than did working-age adults, but a higher rate than older adults. The 6.7 percent of children for whom such needs were reported, an estimated 350, was double the rate for the city, 3.2 percent, and two and a half times the rate for the county, 2.6 percent.
- The percentage of children with unmet needs declined in both the city and the county between 1998 and 2004.

B. Health Status

6. Fair or Poor Health



Adults:

- Two-fifths of all adults in Ward 5, an estimated 3,500, reported being in fair or poor health in 2001, a higher proportion than in Cleveland, where one in three adults were in fair or poor health, and significantly higher than in Cuyahoga County, where one in five adults reported a similar health status.
- As would be expected, at all geographic levels a higher proportion of older adults than working-age adults reported being in fair or poor health. In Ward 5, 62.4 percent of older adults and 37.3 percent of working-age adults so reported, in each case a higher proportion than for corresponding age groups in the city and significantly higher than in the county.
- For both working-age and older adults, the proportion in fair or poor health increased in both the city and the county from 1998 to 2004.

Children:

- Among children in the ward, 6.4 percent, or an estimated 350, were in fair or poor health in 2001, double the rates of 3.1 percent of children in Cleveland and 3.2 percent in the county.
- As with the rates for adults, the percentage of children in fair or poor health increased in both the city and the county from 1998 to 2004.

7. Adults with High Blood Pressure, Heart Disease, and Diabetes

Figure 7A
Percentage of Adults
With High Blood Pressure, 2001

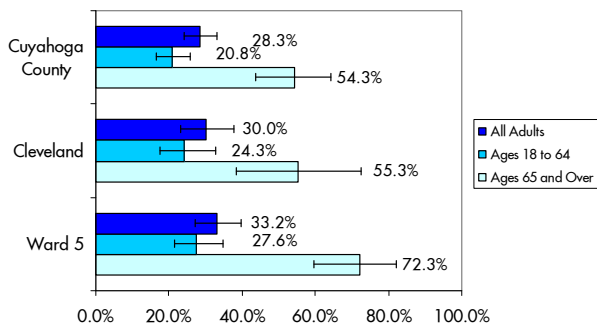


Figure 7B
Percentage of Adults
With Heart or Circulatory Disease, 2001

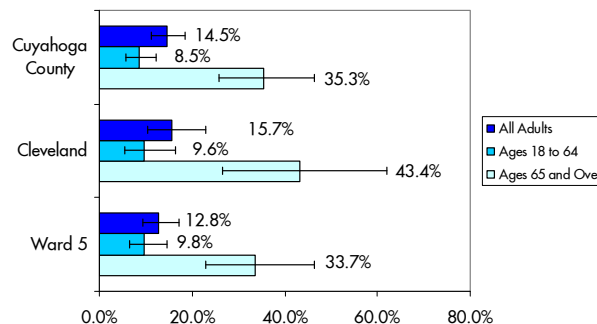
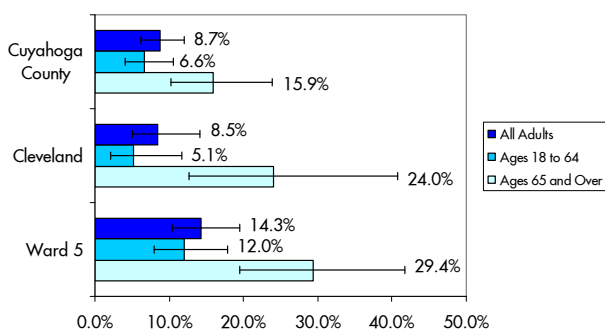


Figure 7C
Percentage of Adults
With Diabetes, 2001



High Blood Pressure:

- In Ward 5, an estimated 2,800 adults, or one in three, reported in 2001 having been told by a health professional that they have high blood pressure, a similar proportion to that for Cleveland and slightly higher than for Cuyahoga County.
- Almost three-fourths of older adults in the ward had high blood pressure, compared to just over half of those in the city and the county. One-fourth of working-age adults in the ward and the city reported high blood pressure, as did one-fifth of working-age adults in the county.
- Between 2001 and 2004, the prevalence of high blood pressure in both the city and the county increased greatly among older adults but increased only slightly among working-age adults.

Heart or Circulatory Disease:

- An estimated 1,100 adults in the ward, about one in eight, reported in 2001 having been told they had heart or circulatory disease, a lower proportion than in Cleveland and the county, where one in six and one in seven respectively had been so told.

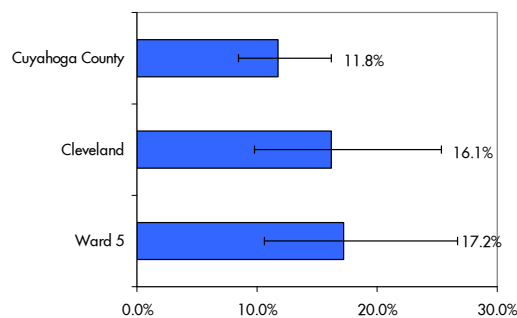
- Among older adults in the ward, one in three reported heart or circulatory conditions, a lower proportion than the more than the 43.4 percent in Cleveland, and slightly lower than the 35.3 percent in the county.
- One in ten working-age adults in the ward reported these conditions, a similar proportion to that in Cleveland and slightly higher than the one in twelve in the county who so reported.
- Among working-age adults, the prevalence of reported heart disease remained constant from 2001 to 2004 in Cleveland, but declined slightly in the county. The prevalence declined among older adults in both the city and the county over the same time period.

Diabetes:

- One in seven adults in Ward 5, an estimated 1,200, reported in 2001 being told they had diabetes, a higher proportion than the one in twelve in both Cleveland and Cuyahoga County.
- Three in ten older adults in the ward reported having diabetes, higher than the one in four older adults in Cleveland and one in six in the county. Among working-age adults, about one in eight in the ward reported being diabetic, more than twice Cleveland’s rate of 5.1 percent, and four-fifths higher than the county’s rate of 6.6 percent.
- From 2001 to 2004, the proportion of working-age adults with diabetes increased slightly in the county but increased by almost half in Cleveland. Among older adults, the prevalence increased in both the city and the county over the same period.

8. Children with Chronic Conditions

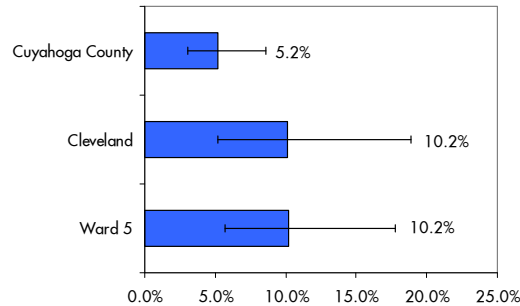
Figure 8
Percentage of Children Under 18
with a Chronic Health Condition, 2001



- The presence of a chronic health condition was reported for an estimated 900 children in Ward 5 in 2001, more than one in six, about the same proportion as in Cleveland, but 50 percent higher than the rate for the county.
- The percentage of children with chronic conditions declined in both the city and the county from 1998 to 2004.

9. Children with Asthma

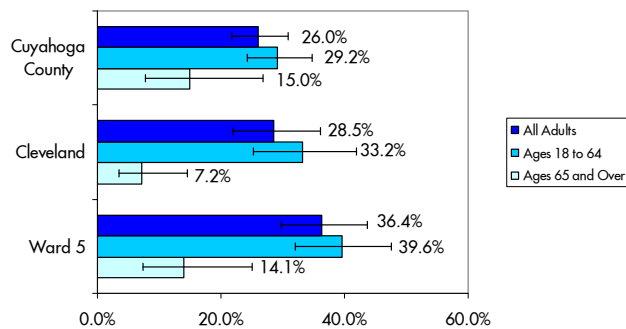
Figure 9
Percentage of Children Under 18
with Asthma, 2001



- In 2001, one in ten children in Ward 5, an estimated 500, were reported to have asthma, about the same proportion as for Cleveland, but twice that for the county.
- From 2001 to 2004, the percentage of children with asthma increased in the city and increased significantly in the county.

10. Adults who Smoke Cigarettes

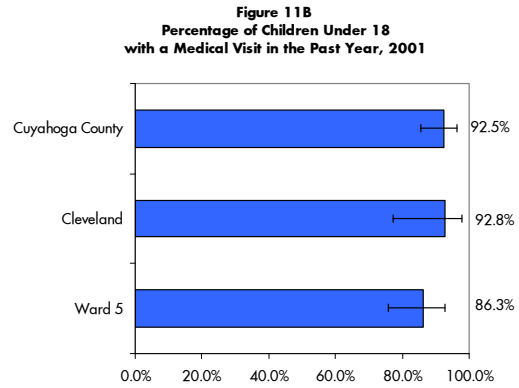
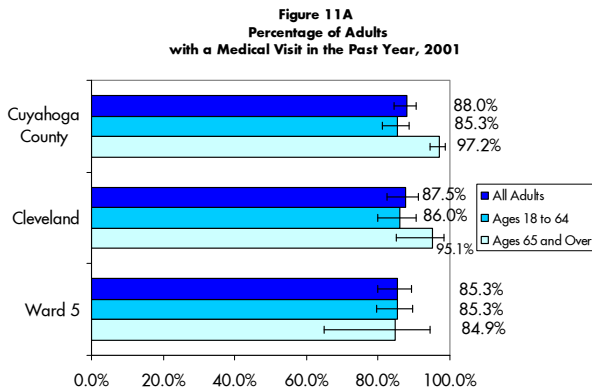
Figure 10
Percentage of Adults
Who Smoke Cigarettes, 2001



- An estimated 3,100 adults in Ward 5, or 36.4 percent, smoked cigarettes in 2001, a higher proportion than in Cleveland, where just under three in ten adults smoked, and higher than in the county, where just over one in four adults smoked.
- Smoking rates were lower among older adults at all geographic levels; one in seven older adults in the ward smoked, compared to almost two-fifths of working-age adults.
- Among both working-age and older adults, smoking declined between 1998 and 2004 in both the city and the county.

C. Health Care Utilization

11. Medical Visits in the Past Year



Adults:

- Eighty-five percent of adults in Ward 5, an estimated 7,300, had at least one visit to a health care professional in the past year in 2001, a slightly lower proportion than the 88 percent of adults in Cleveland and Cuyahoga County.
- Among older adults in the ward, the proportion with a medical visit was the same as for younger adults, 85 percent, but was lower than the city's rate for older adults, 95 percent, and significantly lower than the county's rate of 97 percent.
- Among working-age adults, the proportion with a medical visit increased in both the city and the county between 1998 and 2004. However, among older adults, the proportion increased in the county, but declined in the city.

Children:

- A similar proportion of children in the ward, 86 percent, or an estimated 4,600, had a medical visit in the past year in 2001. As with adults, this was a smaller proportion than for Cleveland and the county, where more than nine out of ten children had a medical visit in the past year.
- The percentage of children with medical visits increased in both the city and the county from 1998 to 2004.

12. Multiple ER Visits in the Past Year

Figure 12A
Percentage of Adults
with Multiple ER Visits in the Past Year, 2001

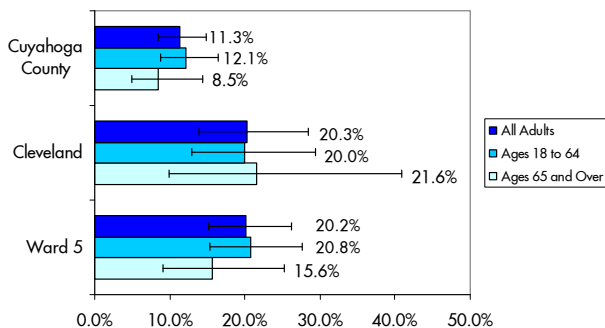
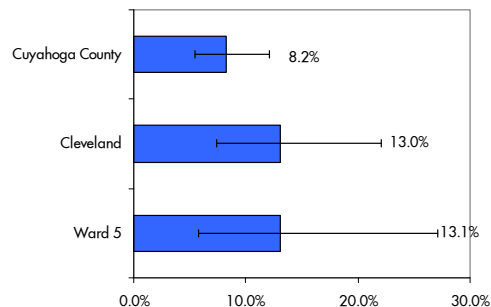


Figure 12B
Percentage of Children Under 18
with Multiple ER Visits in the Past Year, 2001



Adults:

- One out of five adults in Ward 5, an estimated 1,700, visited hospital emergency rooms more than once in 2001, about the same proportion as in Cleveland, but almost double the rate in Cuyahoga County.
- A lower proportion of older adults in the ward, one in six, had multiple ER visits, compared with working-age adults, just over one in five of whom had multiple visits.
- The percentage of working-age adults with multiple ER visits decreased in the city between 1998 and 2004, but increased slightly in the county, while the proportion of older adults with multiple visits increased in both the city and the county over the same time period.

Children:

- Just over one in eight children in the ward, an estimated 700, had multiple ER visits in 2001. As with adults, this was about the same proportion as in Cleveland, but higher than in the county, where only one in twelve children had multiple ER visits.
- In both the city and the county, the percentage of children with multiple ER visits declined from 1998 to 2004.

13. Dental Visits in the Past Year

Figure 13A
Percentage of Adults
with a Dental Visit in the Past Year, 2001

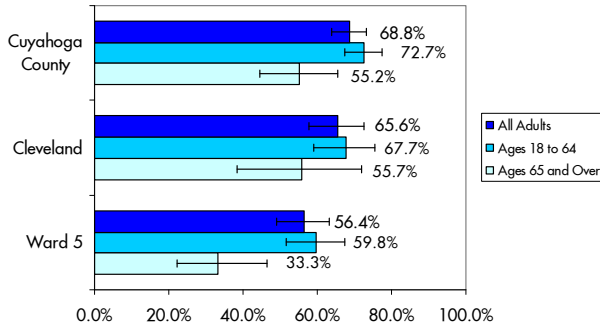
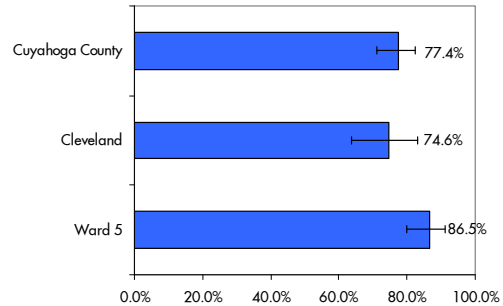


Figure 13B
Percentage of Children Under 18
with a Dental Visit in the Past Year, 2001



Adults:

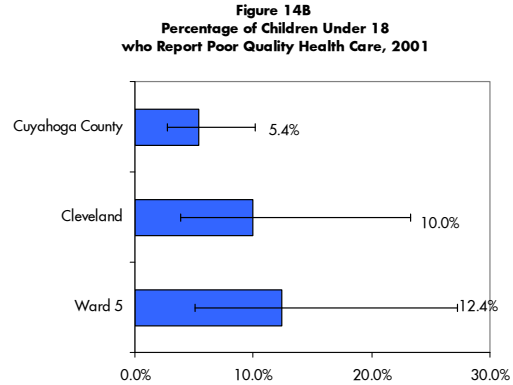
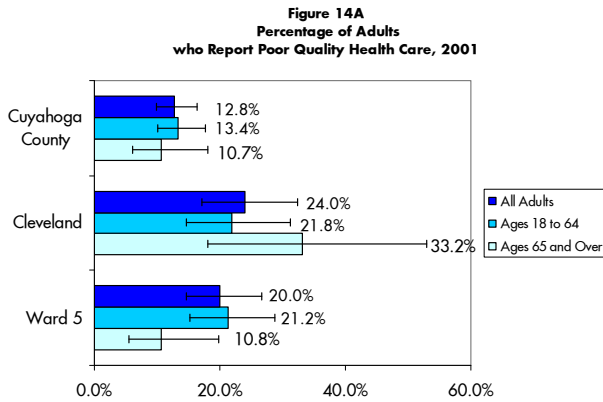
- Just over half of all adults in Ward 5, an estimated 4,900, had a dental visit in the past year in 2001, compared to two-thirds of adults in Cleveland and the county; the difference between the ward and the county was statistically significant.
- A lower proportion of older adults in the ward, one-third, had a dental visit, compared to three-fifths of working-age adults.
- The percentage with dental visits decreased between 1998 and 2004 in both the city and the county among working-age adults, but increased significantly in both areas among older adults.

Children:

- Compared to adults, a greater proportion of children in the ward, 86 percent, or an estimated 4,500, had dental visits in 2001. Ward 5's rate of children's dental care also exceeded the rate for children in Cleveland and the county, where about three-fourths of children in each area had a dental visit.
- The proportion of children with dental visits decreased in the city between 1998 and 2004, but increased in the county.

D. Satisfaction with Health Care

14. Health Care Rated "Poor"



Adults:

- An estimated 1,600 adults in Ward 5, or one in five, rated their overall health care as poor in 2001, about the same proportion as in Cleveland, but a greater proportion than in the county, where one in eight adults rated their care as poor.
- One in ten older adults in the ward rated their care as poor, half the rate of just over one in five working-age adults.
- From 1998 to 2001, the percentage of working-age adults rating their care as poor declined in both the city and the county. Among older adults, however, the percentage increased significantly in the city but declined slightly in the county.

Children:

- Poor quality care was reported for an estimated 650 children in the ward in 2001, about one in eight. This was a slightly higher proportion than for all Cleveland children, but more than twice the rate for the county, where health care for only one in twenty children was reported as poor.
- From 1998 to 2001, the percentage of children for whom quality of care was rated as poor declined in both the city and the county.

DATA TABLES

Table 1A
2001 Cuyahoga Family Health Survey
Health Profile of Ward 5
All Adults Age 18 and Over

	Sample Size		Weighted Number	Percent			Difference Significant at 90% CI		
	Numerator	Denominator		90% CI Lower*	Point Estimate	90% CI Upper*	Ward 5 - Cleveland	Ward 5 - Cuy. Co.	Cleveland - Cuy. Co.
Currently Uninsured									
Ward 5	53	285	2,094	18.3%	24.3%	31.6%	significant	significant	
Cleveland	164	1,038	29,560	7.7%	10.8%	15.1%			
Cuyahoga County	190	1,506	78,705	5.6%	7.6%	10.4%			
Uninsured in Past Year									
Ward 5	70	285	2,679	24.6%	31.1%	38.6%		significant	
Cleveland	228	1,038	57,456	15.6%	21.1%	27.8%			
Cuyahoga County	276	1,506	133,148	10.1%	12.9%	16.3%			
Without Medical Home									
Ward 5	51	285	1,760	14.8%	20.5%	27.5%			significant
Cleveland	191	1,037	91,674	25.8%	33.6%	42.5%			
Cuyahoga County	246	1,502	188,669	14.9%	18.4%	22.6%			
Used ER in Past Year									
Ward 5	99	283	2,873	27.1%	33.5%	40.6%			
Cleveland	339	1,035	103,024	30.2%	37.8%	46.0%			
Cuyahoga County	447	1,500	271,500	22.4%	26.4%	30.8%			
Has Unmet Health Care Needs									
Ward 5	36	282	880	6.9%	10.3%	15.0%			
Cleveland	136	1,033	17,850	4.6%	6.6%	9.2%			
Cuyahoga County	169	1,497	66,883	4.8%	6.5%	8.8%			
In Fair or Poor Health									
Ward 5	128	284	3,481	33.8%	40.6%	47.7%		significant	significant
Cleveland	349	1,034	92,607	26.6%	34.0%	42.2%			
Cuyahoga County	428	1,502	227,619	18.3%	22.1%	26.4%			
Has High Blood Pressure									
Ward 5	124	282	2,792	27.2%	33.2%	39.9%			
Cleveland	394	1,032	81,727	23.3%	30.0%	37.6%			
Cuyahoga County	531	1,499	291,507	24.1%	28.3%	33.0%			
Has Heart or Circulatory Disease									
Ward 5	54	284	1,099	9.4%	12.8%	17.3%			
Cleveland	147	1,035	42,719	10.4%	15.7%	23.0%			
Cuyahoga County	197	1,500	149,532	11.3%	14.5%	18.6%			
Has Diabetes									
Ward 5	56	284	1,208	10.3%	14.3%	19.5%			
Cleveland	127	1,037	23,240	5.0%	8.5%	14.2%			
Cuyahoga County	164	1,502	89,544	6.2%	8.7%	12.0%			
Current Smoker									
Ward 5	90	283	3,120	29.7%	36.4%	43.6%			
Cleveland	327	1,035	77,740	21.9%	28.5%	36.2%			
Cuyahoga County	410	1,499	267,373	21.7%	26.0%	30.8%			
Had Medical Visit in Past Year									
Ward 5	234	278	7,256	79.9%	85.3%	89.4%			
Cleveland	879	1,020	235,260	82.3%	87.5%	91.4%			
Cuyahoga County	1,294	1,480	891,950	84.5%	88.0%	90.7%			
Had Multiple ER Visits in Past Year									
Ward 5	60	283	1,728	15.2%	20.2%	26.2%		significant	
Cleveland	166	1,035	55,227	13.9%	20.3%	28.5%			
Cuyahoga County	202	1,500	115,976	8.5%	11.3%	14.8%			
Had Dental Visit in Past Year									
Ward 5	138	285	4,850	49.2%	56.4%	63.3%		significant	
Cleveland	575	1,036	178,853	57.8%	65.6%	72.6%			
Cuyahoga County	928	1,501	704,165	63.9%	68.8%	73.2%			

Table 1A (continued)
2001 Cuyahoga Family Health Survey
Health Profile of Ward 5
All Adults Age 18 and Over

	Sample Size		Weighted Number	Percent			Difference Significant at 90% CI		
	Numerator	Denominator		90% CI Lower*	Point Estimate	90% CI Upper*	Ward 5 - Cleveland	Ward 5 - Cuy. Co.	Cleveland - Cuy. Co.
Reports Poor Quality Health Care									
Ward 5	44	256	1,554	14.7%	20.0%	26.6%			
Cleveland	180	952	61,782	17.2%	24.0%	32.4%			
Cuyahoga County	219	1,399	122,729	9.9%	12.8%	16.4%			

* Lower and Upper Bounds of 90-Percent Confidence Interval
Source: Cuyahoga Family Health Survey, 2001, compiled by the Center for Community Solutions

Table 1B
2001 Cuyahoga Family Health Survey
Health Profile of Ward 5
Adults Ages 18 to 64

	Sample Size		Weighted Number	Percent			Difference Significant at 90% CI		
	Numerator	Denominator		90% CI Lower*	Point Estimate	90% CI Upper*	Ward 5 - Cleveland	Ward 5 - Cuy. Co.	Cleveland - Cuy. Co.
Currently Uninsured									
Ward 5	50	218	2,054	20.5%	27.4%	35.5%	significant	significant	
Cleveland	156	796	28,203	8.8%	12.6%	17.7%			
Cuyahoga County	180	1,128	74,301	6.7%	9.3%	12.8%			
Uninsured in Past Year									
Ward 5	67	218	2,638	27.7%	35.2%	43.4%		significant	
Cleveland	218	796	54,733	17.9%	24.4%	32.4%			
Cuyahoga County	263	1,128	125,155	12.2%	15.7%	20.0%			
Without Medical Home									
Ward 5	44	218	1,666	15.9%	22.2%	30.2%			significant
Cleveland	160	796	80,043	26.9%	35.8%	45.7%			
Cuyahoga County	201	1,127	153,309	15.3%	19.4%	24.2%			
Used ER in Past Year									
Ward 5	73	218	2,497	26.2%	33.3%	41.2%			
Cleveland	260	795	83,599	28.9%	37.4%	46.6%			
Cuyahoga County	332	1,126	218,791	22.9%	27.5%	32.7%			
Has Unmet Health Care Needs									
Ward 5	34	216	851	7.5%	11.4%	16.8%			
Cleveland	124	793	16,414	5.1%	7.3%	10.5%			
Cuyahoga County	155	1,122	63,533	5.9%	8.0%	10.9%			
In Fair or Poor Health									
Ward 5	83	217	2,793	29.9%	37.3%	45.4%		significant	
Cleveland	237	793	68,216	22.6%	30.5%	39.8%			
Cuyahoga County	279	1,125	152,454	15.1%	19.1%	23.9%			
Has High Blood Pressure									
Ward 5	78	217	2,026	21.5%	27.6%	34.7%			
Cleveland	236	792	54,221	17.4%	24.3%	32.7%			
Cuyahoga County	297	1,124	165,623	16.6%	20.8%	25.7%			
Has Heart or Circulatory Disease									
Ward 5	30	217	728	6.4%	9.8%	14.5%			
Cleveland	84	793	21,491	5.5%	9.6%	16.4%			
Cuyahoga County	105	1,124	67,535	5.8%	8.5%	12.2%			
Has Diabetes									
Ward 5	34	217	884	7.9%	12.0%	17.9%			
Cleveland	68	795	11,504	2.2%	5.1%	11.7%			
Cuyahoga County	86	1,125	52,774	4.1%	6.6%	10.6%			
Current Smoker									
Ward 5	82	218	2,969	32.0%	39.6%	47.6%			
Cleveland	286	795	74,205	25.3%	33.2%	42.0%			
Cuyahoga County	356	1,126	232,682	24.2%	29.2%	34.7%			
Had Medical Visit in Past Year									
Ward 5	177	216	6,377	79.6%	85.3%	89.6%			
Cleveland	664	791	191,825	79.9%	86.0%	90.5%			
Cuyahoga County	955	1,121	672,645	81.1%	85.3%	88.8%			
Had Multiple ER Visits in Past Year									
Ward 5	47	218	1,560	15.3%	20.8%	27.6%			
Cleveland	130	795	44,673	13.0%	20.0%	29.4%			
Cuyahoga County	154	1,126	96,140	8.8%	12.1%	16.4%			
Had Dental Visit in Past Year									
Ward 5	117	218	4,483	51.7%	59.8%	67.3%			
Cleveland	474	795	151,629	59.1%	67.7%	75.3%			
Cuyahoga County	742	1,126	576,180	67.4%	72.7%	77.5%			

Table 1B (continued)
2001 Cuyahoga Family Health Survey
Health Profile of Ward 5
Adults Ages 18 to 64

	Sample Size		Weighted Number	Percent			Difference Significant at 90% CI		
	Numerator	Denominator		90% CI Lower*	Point Estimate	90% CI Upper*	Ward 5 - Cleveland	Ward 5 - Cuy. Co.	Cleveland - Cuy. Co.
Reports Poor Quality Health Care									
Ward 5	37	196	1,455	15.3%	21.2%	28.7%			
Cleveland	143	724	45,653	14.6%	21.8%	31.2%			
Cuyahoga County	173	1,041	98,946	10.0%	13.4%	17.7%			

* Lower and Upper Bounds of 90-Percent Confidence Interval
Source: Cuyahoga Family Health Survey, 2001, compiled by the Center for Community Solutions

Table 1C
2001 Cuyahoga Family Health Survey
Health Profile of Ward 5
Adults 65 and Over

	Sample Size		Weighted Number	Percent			Difference Significant at 90% CI		
	Numerator	Denominator		90% CI Lower*	Point Estimate	90% CI Upper*	Ward 5 - Cleveland	Ward 5 - Cuy. Co.	Cleveland - Cuy. Co.
Currently Uninsured									
Ward 5	3	67	41	1.3%	3.7%	10.0%			
Cleveland	8	242	1,357	0.7%	2.8%	10.5%			
Cuyahoga County	10	378	4,404	0.7%	1.9%	4.7%			
Uninsured in Past Year									
Ward 5	3	67	41	1.3%	3.7%	10.0%			
Cleveland	10	242	2,724	1.9%	5.6%	15.2%			
Cuyahoga County	13	378	7,993	1.6%	3.4%	7.1%			
Without Medical Home									
Ward 5	7	67	94	4.3%	8.5%	16.2%			
Cleveland	31	241	11,631	11.4%	23.8%	43.1%			
Cuyahoga County	45	375	35,361	9.2%	15.3%	24.3%			
Used ER in Past Year									
Ward 5	26	65	376	24.3%	35.0%	47.5%			
Cleveland	79	240	19,425	24.1%	39.7%	57.8%			
Cuyahoga County	115	374	52,709	16.1%	22.7%	31.0%			
Has Unmet Health Care Needs									
Ward 5	2	66	29	0.8%	2.6%	8.7%			
Cleveland	12	240	1,436	0.8%	3.0%	10.4%			
Cuyahoga County	14	375	3,350	0.5%	1.4%	3.8%			
In Fair or Poor Health								significant	
Ward 5	45	67	688	48.0%	62.4%	74.8%			
Cleveland	112	241	24,391	32.9%	49.9%	66.8%			
Cuyahoga County	149	377	75,165	23.3%	32.1%	42.3%			
Has High Blood Pressure									
Ward 5	46	65	766	59.7%	72.3%	82.1%			
Cleveland	158	240	27,506	38.4%	55.3%	72.6%			
Cuyahoga County	234	375	125,884	43.8%	54.3%	64.3%			
Has Heart or Circulatory Disease									
Ward 5	24	67	372	23.0%	33.7%	46.4%			
Cleveland	63	242	21,228	26.5%	43.4%	62.0%			
Cuyahoga County	92	376	81,997	25.7%	35.3%	46.3%			
Has Diabetes									
Ward 5	22	67	325	19.6%	29.4%	41.7%			
Cleveland	59	242	11,736	12.6%	24.0%	40.8%			
Cuyahoga County	78	377	36,770	10.2%	15.9%	23.8%			
Current Smoker									
Ward 5	8	65	151	7.5%	14.1%	25.0%			
Cleveland	41	240	3,536	3.5%	7.2%	14.5%			
Cuyahoga County	54	373	34,690	7.8%	15.0%	26.8%			
Had Medical Visit in Past Year								significant	
Ward 5	57	62	879	65.0%	84.9%	94.4%			
Cleveland	215	229	43,435	85.1%	95.1%	98.5%			
Cuyahoga County	339	359	219,305	94.6%	97.2%	98.5%			
Had Multiple ER Visits in Past Year									
Ward 5	13	65	168	9.2%	15.6%	25.3%			
Cleveland	36	240	10,554	9.9%	21.6%	40.9%			
Cuyahoga County	48	374	19,835	4.9%	8.5%	14.4%			
Had Dental Visit in Past Year									
Ward 5	21	67	367	22.4%	33.3%	46.4%			
Cleveland	101	241	27,224	38.2%	55.7%	71.8%			
Cuyahoga County	186	375	127,985	44.6%	55.2%	65.4%			

Table 1C (continued)
2001 Cuyahoga Family Health Survey
Health Profile of Ward 5
Adults 65 and Over

	Sample Size		Weighted Number	Percent			Difference Significant at 90% CI		
	Numerator	Denominator		90% CI Lower*	Point Estimate	90% CI Upper*	Ward 5 - Cleveland	Ward 5 - Cuy. Co.	Cleveland - Cuy. Co.
Reports Poor Quality Health Care									
Ward 5	7	60	98	5.6%	10.8%	19.8%			
Cleveland	37	228	16,130	18.0%	33.2%	52.9%			
Cuyahoga County	46	358	23,783	6.1%	10.7%	18.0%			

* Lower and Upper Bounds of 90-Percent Confidence Interval
Source: Cuyahoga Family Health Survey, 2001, compiled by the Center for Community Solutions

Table 2
2001 Cuyahoga Family Health Survey
Health Profile of Ward 5
Children Under Age 18

	Sample Size		Weighted Number	Percent			Difference Significant at 90% CI		
	Numerator	Denominator		90% CI Lower*	Point Estimate	90% CI Upper*	Ward 5 - Cleveland	Ward 5 - Cuy. Co.	Cleveland - Cuy. Co.
Currently Uninsured									
Ward 5	9	99	607	4.6%	11.4%	25.7%			
Cleveland	24	327	6,245	2.9%	5.6%	10.6%			
Cuyahoga County	32	475	21,565	3.4%	6.5%	12.0%			
Uninsured in Past Year									
Ward 5	16	99	1,156	11.4%	21.8%	37.5%			
Cleveland	56	327	19,261	10.5%	17.4%	27.4%			
Cuyahoga County	68	475	38,860	7.6%	11.7%	17.6%			
Without Medical Home									
Ward 5	9	101	211	1.8%	3.9%	8.3%			
Cleveland	23	331	3,754	1.5%	3.4%	7.4%			
Cuyahoga County	28	479	16,479	2.3%	4.9%	10.5%			
Used ER in Past Year									
Ward 5	33	101	1,364	15.7%	25.3%	38.1%			
Cleveland	99	332	34,656	21.9%	31.2%	42.3%			
Cuyahoga County	139	480	91,711	22.0%	27.5%	33.8%			
Has Unmet Health Care Needs									
Ward 5	10	100	356	3.5%	6.7%	12.2%			
Cleveland	25	330	3,649	1.6%	3.3%	6.5%			
Cuyahoga County	29	478	8,566	1.3%	2.6%	4.9%			
In Fair or Poor Health									
Ward 5	9	101	346	3.3%	6.4%	12.1%			
Cleveland	24	332	3,422	1.5%	3.1%	6.4%			
Cuyahoga County	31	479	10,527	1.8%	3.2%	5.4%			
With Chronic Health Condition									
Ward 5	21	100	926	10.6%	17.2%	26.7%			
Cleveland	65	331	17,948	9.8%	16.1%	25.4%			
Cuyahoga County	85	479	39,258	8.5%	11.8%	16.2%			
With Asthma									
Ward 5	12	100	550	5.7%	10.2%	17.8%			
Cleveland	38	331	11,298	5.2%	10.2%	18.9%			
Cuyahoga County	46	479	17,280	3.1%	5.2%	8.6%			
Had Medical Visit in Past Year									
Ward 5	90	100	4,641	76.0%	86.3%	92.6%			
Cleveland	301	327	101,842	77.3%	92.8%	98.0%			
Cuyahoga County	441	475	306,857	85.6%	92.5%	96.2%			
Had Multiple ER Visits in Past Year									
Ward 5	15	101	707	5.8%	13.1%	27.1%			
Cleveland	51	332	14,501	7.4%	13.0%	22.1%			
Cuyahoga County	62	480	27,366	5.5%	8.2%	12.2%			
Had Dental Visit in Past Year									
Ward 5	73	100	4,538	79.8%	86.5%	91.2%			
Cleveland	219	326	82,118	63.9%	74.6%	83.0%			
Cuyahoga County	332	473	256,090	71.2%	77.4%	82.6%			
Reports Poor Quality Health Care									
Ward 5	10	98	651	5.1%	12.4%	27.2%			
Cleveland	30	317	10,924	3.9%	10.0%	23.3%			
Cuyahoga County	38	463	17,717	2.8%	5.4%	10.1%			

* Lower and Upper Bounds of 90-Percent Confidence Interval
Source: Cuyahoga Family Health Survey, 2001, compiled by the Center for Community Solutions

